

Gripper 180° With Two Hinged Jaws , Code- W1530400180

- Toggle-type pivoted grippers, with adjustable opening angle.
- High clamping forces.
- Bottom or side fixing.
- All sizes come with magnets and sensor slots.
- Body made of hard anodized aluminium, jaws and moving parts made of tempered steel.

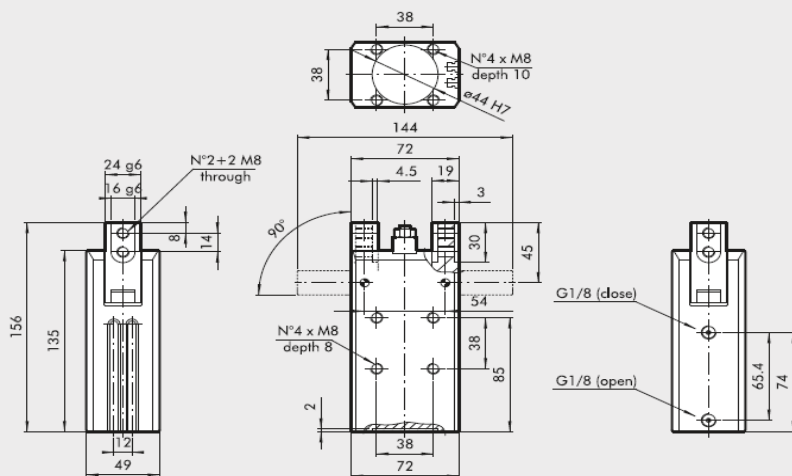
TECHNICAL DATA		P9-32	P9-40
Operating pressure	bar	2 to 8	
	MPa	0.2 to 0.8	
	psi	29 to 116	
Temperature range	°C	-10 to +80	
	Fluid	Filtered, lubricated or unlubricated air; lubrication if used, it must be continuous.	
Bores	mm	32	40
Jaw opening angle		Adjustable 180°	
Clamping force at 6.3 bar 40 mm from the jaw pivot during opening and closing	N	160	260
Weight	kg	0.85	1.5

General Attributes

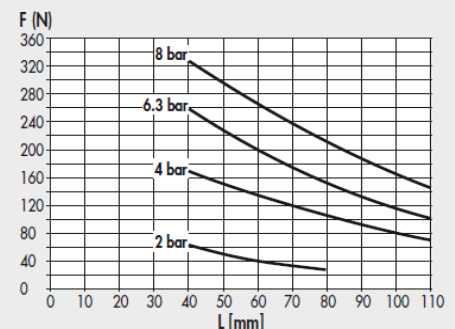
- Type : P9-40
- Diameter (Bore) : 40 mm
- Weight : 1.5 kg



DIMENSIONS OF GRIPPERS P9-40



Code	Description
W1530400180	Hinged gripper P9-40



For further information please visit : <https://goo.gl/wfoWWW>

We are the authorized distributor of Metal Work in Bangladesh.