

Grippers With Two Hinged Jaws – Series P7, Code-W1590160200

Bores 16, 20, 32 and 50 mm.

All grippers are magnetic with slots in the body with retracting sensors.

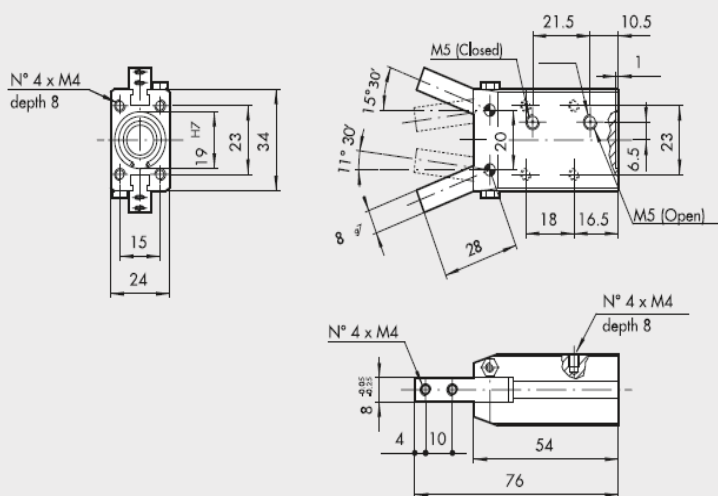
TECHNICAL DATA		P7-16	P7-20	P7-32	P7-50
Operating pressure	bar	2 to 10	2 to 10	2 to 10	2 to 10
	MPa	0.2 to 1	0.2 to 1	0.2 to 1	0.2 to 1
	psi	29 to 145	29 to 145	29 to 145	29 to 145
Fluid		20 µm filtered, lubricated or unlubricated air; lubrication if used, it must be continuous.			
Temperature range	°C	-10 to +80			
Maximum opening angle of single jaw		18°	16° 30'	16°	8° 30'
Clamping force at 6.3 bar 20 mm from the centre of rotation of the jaws, during opening and closing	N	27	50	120	380
Weight	kg	0.12	0.19	0.5	1.6

General Attributes

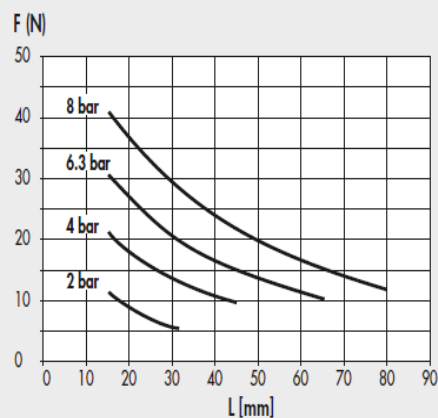
- Type : P7-16
■ Weight : 0.12 kg



DIMENSIONS OF GRIPPERS P7-16



Code	Description
W1590160200	Gripper with 2 hinged jaws P7-16



For further information please visit : <https://goo.gl/wfoWWW>

We are the authorized distributor of Metal Work in Bangladesh.



LISTED IND. CONT. EQ. 81U2
us for use in the secondary of
a class 2 source of supply



IND. CONT. EQ
81U2
for use in the secondary of
a class 2 source of supply
Environmental - Type 1 Enclosure

