

DIN Rail Mount Power supply, Code- BAE0036

Balluff's Short-circuit-proof, single or triple-phase power supplies for automation are approved according to CE/TÜV, UL and CCC. Different voltages of 12 V, 24 V and 48 V can be selected. The most important features: top-hat rail assembly, status display, regulatable output voltage, parallel connection, ready and alarm output. Output power of 18 to 960W. Protection class IP20.

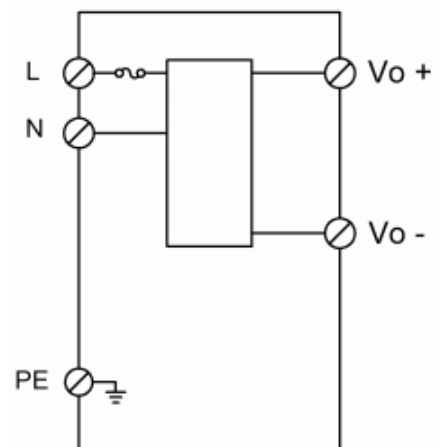
General Attributes

- Dimension : 22.5 x 90 x 114 mm
- Connection : 0.25 mm²...2.5 mm²
- Setting range : 11...14 V DC
- Switching frequency : 130000 Hz
- Input voltage : 100...240 V AC,
1-phase
- Rated output current : 1.5 A
- Output voltage : 12 VDC
- Ambient temperature : -20...70 °C
- Storage temperature : -25...85 °C
- Temperature Coefficient
max : ±0.03 %/K
- Housing material : Plastic
- Isolation resistance : ≥ 100 Ohm
- Basic standard : EN 61204
- Protection type IEC 60529 : IP20



Application Notes

- ☑ For power supply in PLCs
- ☑ In the automobile industry
- ☑ Television receivers as a switch-mode power supply
- ☑ For Powering of LED circuits
- ☑ For Central power distribution



Wiring diagram

For further information please visit : <https://goo.gl/FS929T>

We are the authorized distributor of Balluff in Bangladesh.

