

DIN Rail Mount Power supply, Code- BAE0001

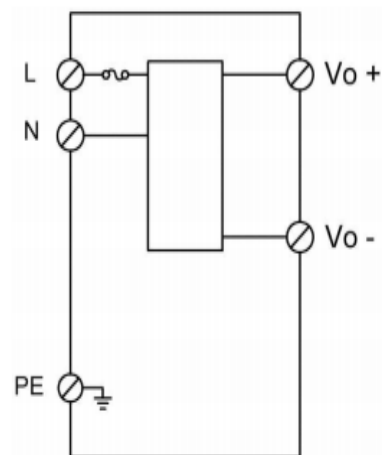
Balluff's Short-circuit-proof, single or triple-phase power supplies for automation are approved according to CE/TÜV, UL and CCC. Different voltages of 12 V, 24 V and 48 V can be selected. The most important features: top-hat rail assembly, status display, regulatable output voltage, parallel connection, ready and alarm output. Output power of 18 to 960W. Protection class IP20.

General Attributes

- Dimension : 40.5 x 124.5 x 116.6 mm
- Connection : 0.25 mm²...2.5 mm²
- Setting range : 22.5...28.5 VDC
- Switching frequency : 130000 Hz
- Input voltage : 90...264 V AC
120...375 V DC
- Output voltage : 24 VDC
- Ambient temperature : -20...70 °C
- Storage temperature : -25...85 °C
- Protection type IEC 60529 : IP20
- Temperature Coefficient
max : ±0.03 %/K
- Housing material : Plastic
- Isolation resistance : ≥ 100 Ohm
- Rated input current : 340 mA at 115 V AC
210 mA at 230 V AC

Application Notes

For power supply in PLCs
In the automobile industry
Television receivers as a switch-mode power supply
For Powering of LED circuits
For Central power distribution



Wiring diagram

For further information please visit : <https://goo.gl/UsHk1j>