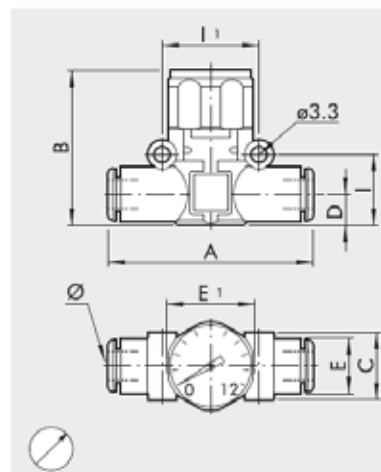


In Line Pressure Gauge , Code- 9067024

The MAN L pressure gauge belongs to the LINE ON LINE® family, which means it can be connected to all the other components in series or in parallel. Available in the version for pipe-pipe connection with two push-in fittings, and in the version for thread-pipe connection with a brass nickel-plated male thread and a push-in fitting. Though small in size, this pressure gauge, which is supplied in a metal casing, ensures accurate reading. It can be angled in any direction simply by rotating manually.

GENERAL ATTRIBUTES

■ Ref.	: MAN L 8-8
■ Ø	: 8
■ A	: 57.3
■ B	: 41
■ C	: 18.7
■ D	: 9.1
■ E	: 13.8
■ E	: 23
■ I	: 18.7
■ I1	: 24



Wiring Diagram

TECHNICAL DATA

□ Operating pressure MPa	: 1.2
□ bar	: 12
□ psi	: 174
□ Temperature range °C	: - 20 to + 60
□ Precision	: ± 4% full scale
□ Recommended pipe	: Rilsan PA11 - Nylon 6 - Polyamide 12 - Polypropylene
□ Fluid	: Lubricated or unlubricated filtered compressed air
□ Compatibility with oils	: Please refer to page 6-7 of the technical documentation

For further information please visit : <https://goo.gl/TPYAnf>

