

IN-LINE SHUTOFF VALVE SERIES V2V L AND V3V L

V2V L and V3V L shutoff valves belong to the LINE ON LINE family which means they can be connected to all the other components in series or in parallel. Available in the version for pipe-pipe connection with two push-in fittings, and in the version for thread-pipe connection with a brass nickel-plated male thread and a push-in fitting.

V2V is a two-way unidirectional valve, while V3V is a three-way valve with free discharge in the area around the control knob.

The locked version is probably the smallest available on the market.

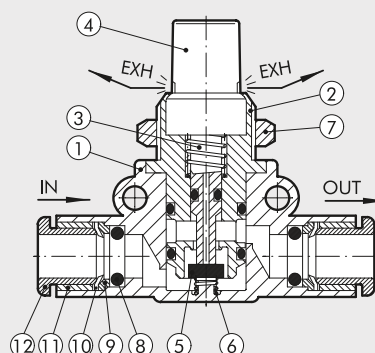
A lock is provided to ensure the valve is kept in the closed position during machine maintenance. The valve is supplied complete with a lock and two keys.



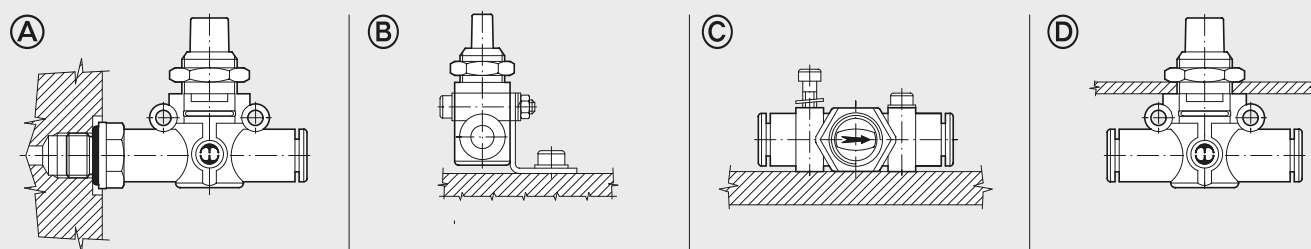
TECHNICAL DATA		Ø 6	Ø 8
Operating pressure	MPa	1	
	bar	10	
	psi	145	
Temperature range	°C	- 20 to + 60	
	°F	- 4 to + 140	
Flow rate at 6.3 bar ΔP 1 bar	NI/ min	280	470
Exhaust flow rate at 6.3 bar	NI/ min	110	110
Recommended pipe		Rilsan PA11 - Nylon 6 - Polyamide 12 - Polypropylene	
Fluid		Lubricated or unlubricated filtered compressed air; if used, must be continuous	
Compatibility with oils		Please refer to page 6-7 of the technical documentation	

COMPONENTS

- ① Technopolymer body
- ② Nickel-plated brass insert
- ③ Brass rod
- ④ Technopolymer knob
- ⑤ NBR valve
- ⑥ Stainless steel valve compression spring
- ⑦ Nickel-plated brass wall-mount ring nut
- ⑧ NBR gasket
- ⑨ Technopolymer spring ring
- ⑩ Stainless steel folding spring
- ⑪ Technopolymer locking bushing
- ⑫ Technopolymer release bushing



ASSEMBLY OPTIONS



How to mount the V2V/V3V L:

- Fig. A With the male threaded port it is possible to mount the V2V/V3V L straight onto the female thread.
- Fig. B Fixing to the plate with the special SQU L bracket.
- Fig. C There are two robust rings on the plastic body for fixing the V2V/V3V L straight onto the wall.
- Fig. D The ring nut is screwed onto the threaded metal part of the V2V/V3V L body for panel mounting.