

IN-LINE QUICK-EXHAUST VALVES SERIES VSR L



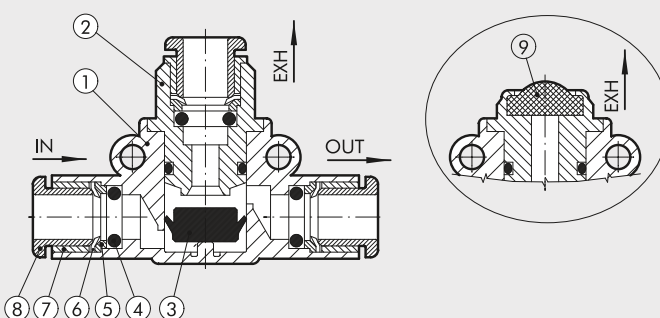
The VSR L quick-exhaust valve belongs to the LINE ON LINE family, which means it can be connected to all the other components in series or in parallel.
Available in the version for pipe-pipe connection with two push-in fittings, and in the version for thread-pipe connection with a brass nickel-plated male thread and a push-in fitting.
Exhaust can be silenced using a STAINLESS steel wire silencer, or conveyed using a push-in fitting.



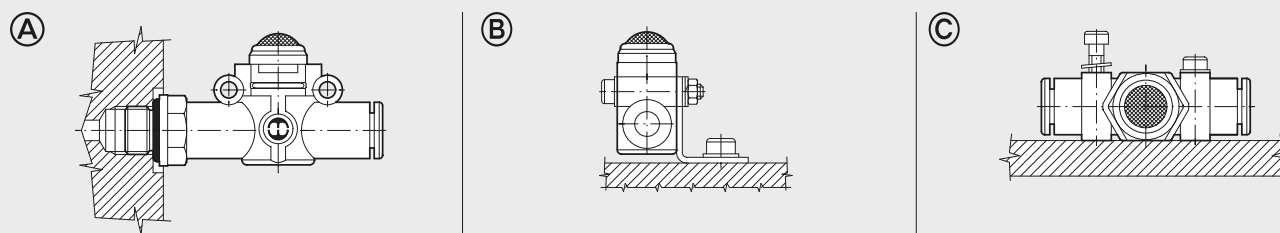
TECHNICAL DATA		Ø 4	Ø 6	Ø 8
Inlet pressure	MPa	0.1 - 1		
	bar	1 - 10		
	psi	14.5 - 145		
Temperature range	°C	-20 to +60		
	°F	-4 to +140		
Inlet flow rate at 6.3 bar ΔP 1 bar	NI/min	50	270	400
Exhaust flow rate at 6.3 bar	NI/min	100	700	1000
Recommended pipe		Rilsan PA 11 - Nylon 6 - Polyamide 12 - Polypropylene		
Fluid		Lubricated or unlubricated filtered compressed air; if used, must be continuous		
Compatibility with oils		Please refer to page 6-7 of the technical documentation		

COMPONENTS

- ① Technopolymer body
- ② Nickel-plated brass insert
- ③ NBR valve
- ④ NBR gasket
- ⑤ Technopolymer spring ring
- ⑥ Stainless steel folding spring
- ⑦ Brass or technopolymer locking bushing
- ⑧ Technopolymer release bushing
- ⑨ Stainless steel wire silencer



ASSEMBLY OPTIONS



How to mount the VSR L:

- Fig. A With the male threaded port it is possible to mount the VSR L straight onto the actuator.
- Fig. B Fixing to the plate with the special SQU L bracket.
- Fig. C There are two robust rings on the plastic body for fixing the VSR L straight onto the wall.