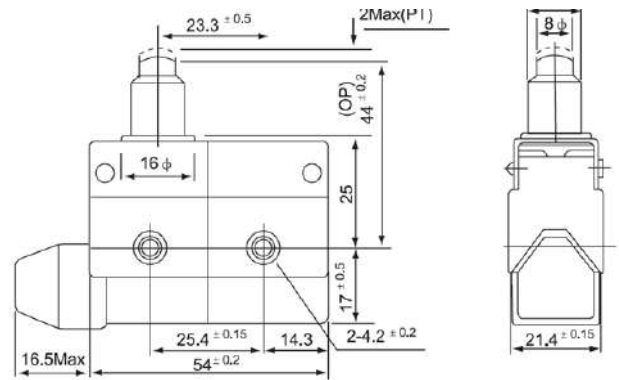


Micro Switch, Code : CZ-7110

Micro switch is an electric switch that is actuated by very little physical force, through the use of a tipping-point mechanism. CZ-7110 consists various of actuators, the operation position is adjustable. It's outer shell is covered with intensive plastic, is also water-proof and oil-proof. The mechanical strength is better than CM type of micro switch and bear hitting.

General Attributes

- Operating Force (Max.) : 600g
- Release Force (Min.) : 100g
- Pre Travel (Max.) : 2.0mm
- Over Travel (Min.) : 5.0mm
- Movement Differential : 0.8mm
- Free Position (Max.) : 36.5mm
- Operating Point : 44 ± 1.2 mm
- Operation speed : 0.01mm-1m/sec
- Operating frequency : Mechanical: 240 operations /min. Electrical: 20 operations/min.
- Contact resistance : 15mΩ max. (initial value)
- Insulation resistance : 100mΩ min. (at 500VDC)
- Dielectric Strength : 1000VAC, 50/60 Hz for 1 minute between terminals of the same polarity
1500VAC, 50/60 HZ for 1 minute between current-carrying and non-current-carrying metal parts
1500VAC, 50/60 HZ for 1 minute between each terminal and ground
- Vibration : 10-55Hz, 1.5mm double amplitude
- Shock : Mechanical durable: 1, 000m/Sec² (about 100G'S)
Malfunction: 300m/Sec² (about 30G'S)
- Ambient temperature : General purpose type : -25°C to +80°C (With no icing),
Sealed type: -15°C to +80°C (With no icing)
- Humidity : General purpose type: 85% RH max., Sealed type: 95% RH max.
- Life : Mechanical: 20,000,000 operations/min.
Electrical: 500,000 operations/min.
- Weight : About 22 to 58g



Wiring Diagram

Application Notes

For detecting passage of a moving part or for implementing an electronic limit stop.
Door interlock on a microwave oven.
Levelling and safety switches in elevators, vending machines.
To detect paper jams or other faults in photocopiers
In tamper switches on gate valves on fire sprinkler systems and other water pipe systems to know if a valve has been opened or shut.
In appliances, machinery, industrial controls, vehicles, convertible tops and many other places for control of electrical circuit.
To control small motors, solenoids, lamps or other devices.

For further information please visit : <https://goo.gl/d6VWHj>